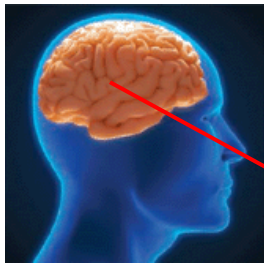
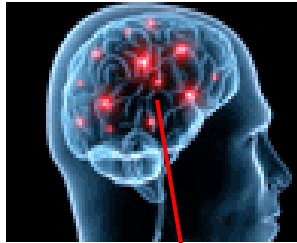


Human *Bartonella* Diseases

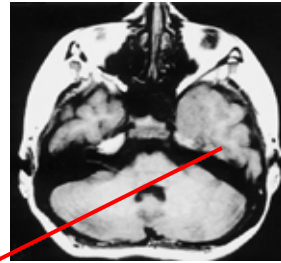
Derived from Feline *Bartonella*®



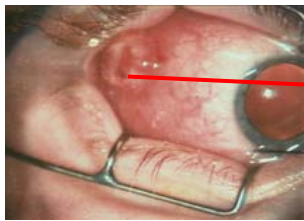
Seizures



Cognitive dysfunctions, depression & psychoses



Brain granulomas



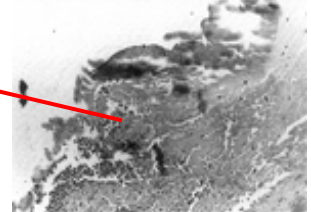
Granulomatous conjunctivitis



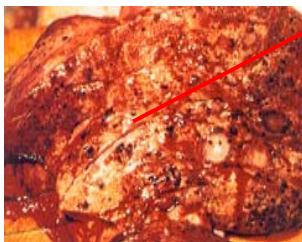
Axillary lymphadenopathy



Chorioretinitis



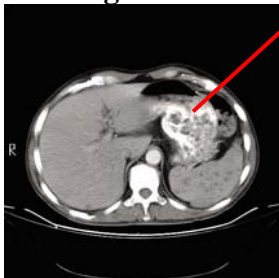
Heart- vegetative valvulitis



Liver granulomas



Inguinal lymphadenopathy



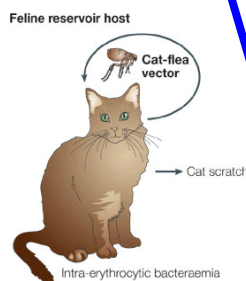
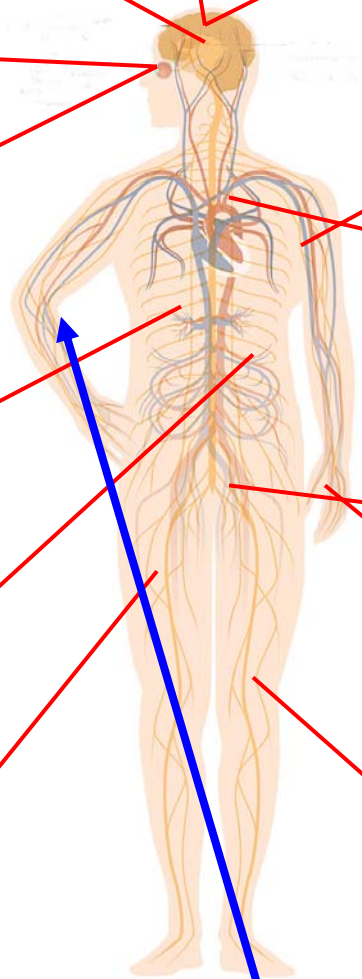
Splenic granulomas



Papule at scratch site



Granuloma annulare- skin



Arthropathy & myopathy